



# Your Hometown

## Your Choice, Your Hospice

Volume 26

“Excellence Is Our Standard”

WINTER 2022

Richmond County Hospice, Hospice Haven & Anson Community Hospice



**Richmond  
County  
Hospice, Inc.**

Hospice Haven & Anson Community Hospice



### In-kind Sponsors

- 82nd Airborne Military Band  
AMVETS Post 316  
Andrew Leyden  
Billy Dunn
- East Rockingham Elementary School Students
- BVGG Properties (910) 206-5671  
James Mims  
Kate Leyden
- Midguard K9 Solutions
- Outreach for Jesus
- SGM Peter A. Leyden, Jr.
- Richmond County Memorial Park
- Richmond County Partnership for Children
- Richmond County Sheriff's Office Honor Guard
- Richmond Senior High School JROTC Cadets  
Robin Roberts
- Sheriff Mark Gulleddge  
Amani Smith  
Sarah Sriratanakoul
- Dr. Michael Sundborg, Col. Retired
- The Salty Bean Coffee Co.
- VFW Post 4203 Auxiliary  
Wings of Love

## Meet Our Hospice Family

### HOSPICE NURSE AIDES

Tammy Bull, NA II, CHPNA  
Hospice Aide Coordinator

Stephanie Baldwin, NA I  
Teresa Graham, NA II  
Esmeralda Rodriguez, NA I  
Annalisa Thompson, NA I  
Sybil Oxendine, NA I  
Erica L. Armstrong, NA I  
Latonia D. Williams, NA I  
Regina Smith, NA I  
Myrtle Paul, NA I

### PATIENT CARE TECHNICIANS

Jaikyla C. Dumas, NA I  
Audrey Martin, NA I  
Bernice Thompson, NA I  
Kathy Taylor, NA I  
Angela M. McDonald, NA I  
Kay Brewington, NA I

### HEMOCARE PRIMARY NURSES

Lisa Wood, RN,CHPN  
Home Care Team Coordinator

Hayley N. Plyler, RN, BSN  
Lori Jenkins, RN  
Michelle Rogers, BSN RN  
Brooke Tedder, RN  
Christine Strickler, RN  
Miranda Watson, RN  
Karen Grant, LPN

### INPATIENT NURSES

Karen Geiger, RN,MSN  
Teresa Balzer, RN,BSN,CHPN  
Michele Huneycutt, RN/ADN  
Kathleen Camp, RN,CHPN  
Shonda Crump, LPN  
Teri McDonald, LPN

### PRN HOSPICE AIDES

Latoya Ratliff, PRN-Patient Care Technician

### PRN NURSES

Patricia Wheeler, RN,PRN  
Leslie Gadson, RN,PRN  
Vanonda Lineberger, RN, PRN  
Seth Dixon, RN, PRN  
Hannah Taylor, RN, PRN

### ON CALL NURSES

Johanna Poole, RN, BSN  
Natalie Barbour, BSW, RN, BSN

### COMPLIANCE & OUTREACH

Heather Monroe, RN,CHPN  
Compliance Coordinator

Lisa M. Luckey  
Volunteer & Outreach Coordinator

Linda Russell  
Volunteer & Outreach Assistant

### FAMILY SERVICES

Sandy Black, BSW  
Bereavement Coordinator

Mary Martha Warnock, BSW  
Social Worker

Shannon Huff, BA  
Social Worker

Jamie Connolly  
Social Worker, MSW, LCSW-A

Stephanie Thornton, BA  
Inpatient Care Coordinator  
Social Worker

Katie Spearman, MSW, LCSW-A

Christopher Thornton, CPC  
Chaplain

Kenneth Lyerly, MDIV.  
Chaplain

### MEDICAL STAFF

Dr. Thai Trihn, Hospice Physician  
Susan McDonald, FNP

### SUPPORT STAFF

Lisa O'Neal, AA, Clinical Office Coordinator  
Jane Burnette, Billing/Account Specialist  
Kelly Williams, Receptionist/Secretary  
Buddy Edwards, Maintenance Technician  
Rosa English-PRN Sitter/Housekeeper  
Vladimir Tushin, Housekeeping  
Lynn Clewis, Stenographer  
Nic Wilkes, Creativity Coordinator

### LEADERSHIP

Kristina Leyden, MSW, LCSW  
Chief Executive Officer

Steven Strobel, MD  
Chief Medical Officer

Julie Woody, RN,CHPN  
Director of Public Relations

Marvin Taylor, BS  
Director of Finances

Arturo De Aguilar, MA, MDIV.  
Director of Human Resources

Jessica Mims, BSW,CHP-SW  
Director of Family Services

Jenny Mabe, RN, CHPN  
Director of Nursing (Home Care)

Hollie Smith, RN, CHPN  
Director of Inpatient Care

### BOARD OF DIRECTORS

Rev. Steve Crews, Chairman  
Cleve Baxley, Vice Chairman  
Sharon Hutchinson, Secretary  
Wayne Burgess, Treasurer  
Carlotta Griffin-Knotts  
Chuck Cobb  
Dennis Quick  
Mary Kate Lambeth  
Patti Jenkins  
Rev. Chris Hawks  
Linda Arrington  
Neal Watkins  
Jonathon Lewis  
Ken Bostick

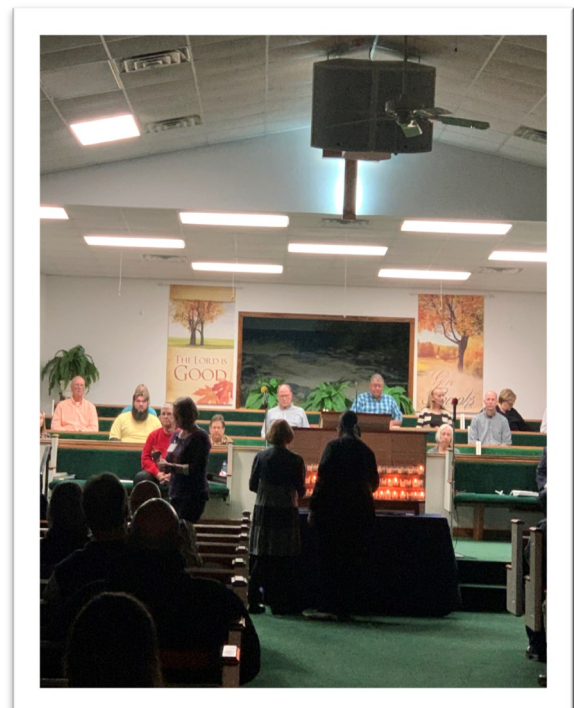
All of our volunteers who are part of our Richmond County Hospice Family. Their gift of time and dedication makes our organization the best "Home Town Hospice" around!



## Light of Life Memorial Celebration

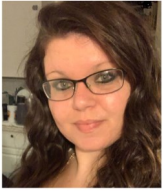
On Tuesday, November 16<sup>th</sup> Richmond County Hospice, Inc. held our Light of Life Memorial Celebration. Faith FreeWill Baptist Church of Rockingham hosted the special event. Our Light of Life services provide families and staff the opportunity to cherish the memory of loved ones who have passed during the last six months while reminding us that we are not alone in our grief.

Since the pandemic had interfered with the planned services in 2020, staff was grateful to return to our “traditional” Light of Life service. Pastor David Lee brought a message of hope and God’s comfort for all in attendance. Joy Blake was the pianist for the evening as her husband, Marvin Blake directed the church choir who sang two beautiful songs, “What A Day That Will Be” and “When We All Get To Heaven.” The time of remembrance was complimented by the lighting of the unity candle and congregational candles followed by the recognition of the deceased loved ones. The service concluded with prayer and the blessing of the meal which was catered by Rick’s Catering of Laurinburg.



# Welcome TO THE TEAM

*Richmond County Hospice welcomes our new staff members of 2021 through 2022.  
We are so glad you are on our RCH team!*



Regina Smith, CNA-1  
Hospice Aide/  
Homecare



Jaikayla C. Dumas,  
CNA-1  
Patient Care Technician



Karen B. Grant, LPN  
Home Care Primary Nurse



Kathleen Spearman  
MSW, LCSW-A  
Clinical SW  
(PRN)



Bernice Thompson,  
CNA-1  
Patient Care Technician



Latania Williams, CNA-1  
Hospice Aide/Homecare



Hayley Plyler,  
RN, BSW  
Home Care  
Primary Nurse



Lisa M. Luckey  
Volunteer/Outreach  
Coordinator



Myrtle Paul, CNA-1  
Hospice Aide-  
Homecare



Hannah Taylor  
RN, PRN  
Inpatient Nurse  
Haven



Erica L. Armstrong  
CNA-1  
Hospice Aide-Homecare



Leslie Gadson, RN, PRN  
Inpatient Nurse-Haven



Michele Huneycutt  
RN/ADN  
Inpatient Nurse-Haven

WE LOVE  
OUR VOLUNTEERS

WELCOME TO THE TEAM



Deedee comes to us with years of experience taking care of others. Deedee lives in Ellerbe and enjoys the comforts of her home with a view.

Deedee is always glad to go and sit with patients so their loved ones can run errands or go to appointments. Deedee has volunteered before and enjoys the interaction with patients, pets and their families. She will become a big part of our volunteer team and we are glad to have her.



Randy has become part of our volunteer team after years of planning for it. Randy has military background which will be a big help with our Veteran patients. He has volunteered in many areas and enjoys helping others when he can .

He lives in Rockingham with his wife and son. Randy will become a big part of not only visiting our veteran patients but will also help with upcoming events. We are so glad to have him become part of our volunteer team.



Peggy is no stranger to volunteering. She has a love for music and she shares with patients that same love and it always brings a smile to their face.

Peggy is from Wadesboro and after traveling around a bit she has ended up back home. She has a furbaby named Andy who keeps her on her toes with all of his energy. She is no stranger to loss and has pulled herself through which makes her love for hospice very strong. We are so glad to have Peggy as part of our volunteer team.

## *Salute to Veterans*

"We don't know them all. But we owe them all" -unknown.

Richmond County Hospice, Inc hosted the 10th Annual Salute to Veterans event on Friday, November 5th. Braving chilly temperatures, participants bundled up and enjoyed the program. Those in attendance were welcomed by Jessica Mims, Director of Family Services and Lisa O'Neal, Clinical Office Coordinator.

Program highlights included:

- Posting of Colors by the Richmond County Sheriff's Office Honor Guard
- Special Guest Speaker, Dr. Michael Sundborg, Col. Retired (Army) and currently working at First Health as the GYN Oncologist.
- National Anthem & Service Medley by the 82nd Airborne Division Band Brass Quintet
- Moment of silence in memory of former Sheriff James "Clem" Clemmons and prayer by Chaplain Chris Thornton
- Raffle by the AMVETS post 316
- K-9 Demonstration presented by Midgard K-9 Solutions
- Missing Man Table presentation by the AMVETS Post 316
- 21-gun salute/TAPs by Richmond County Sheriff's Office Honor Guard
- Dove release courtesy of Wings of Love
- Parachute demonstration and jump by the All-Veterans Parachute Team
- A Cappella Performance of National Anthem during jump by SGM Peter Leyden, Jr.
- Facts from War eras read by Teen Volunteers: Kate Leyden, James Mims, Andrew Leyden, and Amani Smith

• Closing prayer by Sheriff Mark Gullede

This event was made possible by Richmond County Hospice and the following generous sponsors:

- Katie Mabe, Realtor with Everything Pines Partners – All-Veterans parachute team sponsor
- Watson-King Funeral Homes – meal sponsor
- Great Falls Wealth Management
- REV Federal Credit Union
- Mabry's Drug and Home Care
- Wise Hospice Options
- Armando's Mexican Grill
- Cascades Industries
- Epsilon, Inc.

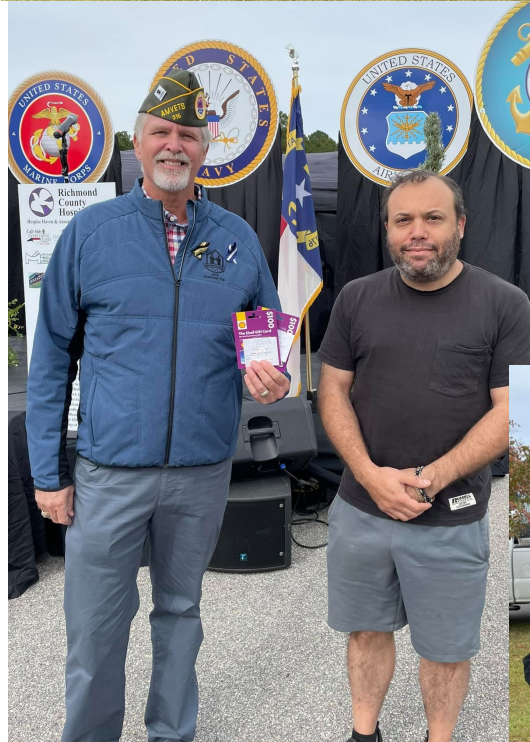
In addition to those that participated in the program, the following in-kind sponsors also provided support:

- Billy Dunn
- BVGG Properties
- East Rockingham Elementary School students
- Outreach for Jesus
- Richmond County Memorial Park
- Richmond County Partnership for Children
- Richmond Senior High JROTC
- Robin Roberts
- Sarah Sriratanakoul
- The Salty Bean Coffee Co.
- VFW Post 4203 Auxiliary

We appreciate all the hard work from our committee who made this event possible. All the staff at Richmond County Hospice and volunteers were honored to host this special day of recognition for our Veterans and we are grateful for the support from our sponsors to make this day possible!

"America without her soldiers would be like God without His angels" -Claudia Pemberton











*"Christmas is a tonic for our souls. It moves us to think of others rather than ourselves. It directs our thoughts to giving" -B.C. Forbs*

On the weekend of November 12th-14th, the staff of Richmond County Hospice hosted the Mistletoe Gallery Christmas Tree and Décor Silent Auction. The concept for Mistletoe Gallery came about through years of discussion on bringing more family centered activities to our area. In addition, the absence of our main fundraiser gave us the time and opportunity to finally bring one of these ideas to fruition. Once again we find ourselves in a place where we could not have done this without these generous donors and sponsors:

Mabry's Drug and Home Care	Jonathon Lewis
Enterprise Fleet Management	Karen Everett Relator with Coldwell Banker Preferred Properties, LLC
The Moree Family	Sarah Sriratanakoul Relator with Platinum Plus Reality
Richmond Service League	Nic Wilkes
Great Falls Wealth Management	Andrea McIver
RBS Case Management	Buddy Edwards & Melissa Staub
VonDrehle Corporation	Jewel Bullard
Misty and Sam Crouch	Carolina Realty Co. Southeast
Pee Dee Electric Membership Corporation	Julie Woody
Trinity Manufacturing	DeWitt's Outdoor Sports
The Leyden Family	Our Southern Roots
R/E Premiere Real Estate-Rusty Edwards	Buffy Keller McKenzie
Iron Horse Auction Company	Lowe's Foods of Southern Pines
Smithfield's Chicken N BBQ	Sweet Clay Earrings
Studio 3	Evolution Health Club
Tri-Cook Electrical Contractors	Little River Threads
Beach Tyme Bouncies	Small Town Girl Boutique
Double Vision Night Life	Brian and Genny Baucom
Hillside Florist	Nancy Maney
Ellerbe Senior Center	Shawn Weigman Designs
East Rockingham Senior Center	TAGG Properties
Mercantile On Board	Ladies of Community Church
Simply Chic Boutique	Stephanie Thornton
Doug's Bail Bonds	Mary Martha Warnock
Roberdel Baptist School	Shannon Huff
Amy White	Hayley Plyler
Jamie Connelly	Charlotte Carriker
Food Lion	Edwards IGA
Carole Venable	Michele Huneycutt

We also want to thank ALL our volunteers and staff members who helped organize, prepare and work this event. A special shout out to these amazing individuals Nic Wilkes, Julie Woody, Lisa Luckey, Heather Monroe and Shannon Huff.

*"Sometimes, if you want to see a change for the better, you have to take things into your own hands" -Clint Eastwood*



